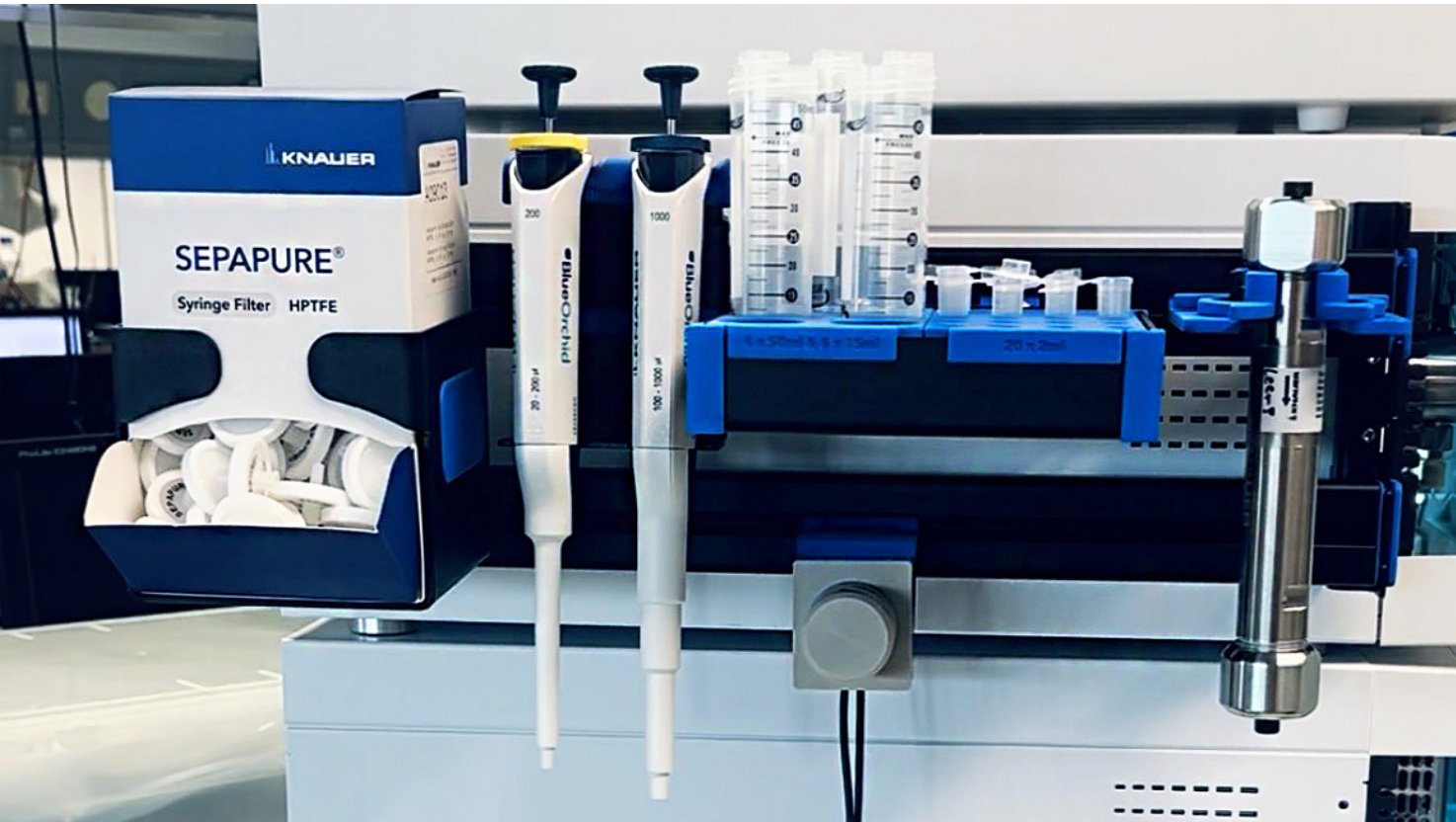




# Product catalogue

## SmartIntegrate

Integrative Organisational Solutions for Laboratory Workstations



# Table of Contents

Your Advantage in Everyday Laboratory Work.....	3
SmartIntegrate   Integrative Organisational Solutions.....	6
The Configuration.....	6
KNAUER SmartEdge.....	7
Modules.....	8
Customising.....	13
Item Overview.....	15
Technical Information.....	16

# Your Advantage in Everyday Laboratory Work

## Better Basics Laborbedarf – Your Advantage in Everyday Laboratory Work

Better Basics Laborbedarf optimises laboratories and their workspaces with innovative, award-winning organisational systems. We support our customers in creating the best possible working environment for their laboratory staff, helping to unlock the full potential of their laboratories. This approach ensures consistently high quality, efficiency, and process stability in the lab while providing a safe, ergonomic workplace with satisfied employees.

### Enhancing Employee Satisfaction

Our SmartRack® and SmartIntegrate product families offer a comprehensive system to optimise laboratory workflows. With over 100 modular solutions, they not only ensure order but also noticeably improve working conditions. Enhanced ergonomics, reduced movement paths, and clearly structured workstations increase both efficiency and employee satisfaction. Safe and organised environments reduce stress and promote job satisfaction. Furthermore, they demonstrably contribute to improved workplace safety and occupational health through thoughtful placement and ease of use.

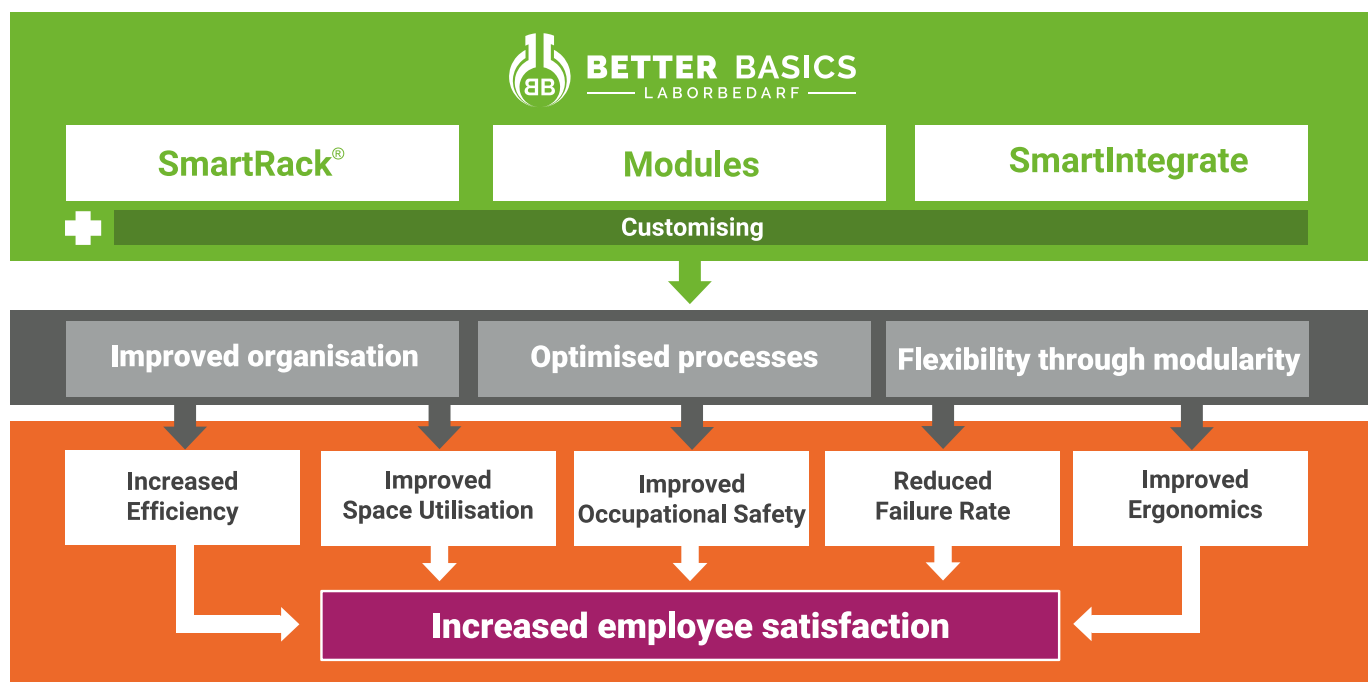
### A System for Sustainable Process Improvement

Our product families are designed to standardise workflows and save time. The modular concept of SmartRack® and SmartIntegrate allows for flexible adaptations to any laboratory environment – from safety workbenches to large open-plan labs. These systems not only optimise space utilisation but also increase efficiency by an average of 30% and save up to 80% space. With a wide range of modules and accessories, they offer customised solutions for every need.

### Efficient, Safe, and Satisfying

For decision-makers and managers, SmartRack® and SmartIntegrate ensure process stability and economical resource use. At the same time, these systems provide innovation managers and organisational developers with the ideal basis for forward-looking workplace designs. For laboratory staff, this means fewer errors thanks to well-structured work areas, a more relaxed working environment, and often the ability to finish earlier due to significantly improved workflows.

**Discover how Better Basics Laborbedarf can transform your everyday laboratory work – for more efficient processes, satisfied employees, and excellent results.**



## The product overview of Better Basics

### ▶ SmartRack®, the mobile solution for: laboratory workbench, fume hood and safety cabinet



#### + Customised solutions

### ▶ SmartIntegrate, the integrative solutions for

#### I. Laboratory workbench



#### II. Fume hood



#### III. Safety cabinet



#### IV. Integration into laboratory equipment



#### + Customised solutions

### ▶ Modules

- Currently, more than 100 modules
- All modules in the Better Basics catalogue can be used universally in all SmartRack® and SmartIntegrate solutions
- Customised modules can be developed based on the specific customer needs, all customised modules can be used in all SmartRack® and SmartIntegrate solutions



#### + Customised solutions

# SmartIntegrate - For Optimal Integration

The SmartIntegrate product line offers organisational solutions that integrate seamlessly into your existing lab infrastructure. The SmartFrame, for example, can be easily integrated into any fume hood, while the SmartRail provides additional storage space on media cells and laboratory benches. The SmartEdge optimises organisation in biosafety cabinets or fume hoods.

All SmartIntegrate organisational systems benefit from the compatibility of all Better Basics modules with these SmartIntegrate organisational solutions, ensuring intuitive and safe usage.

▶ **SmartIntegrate**, the integrative solutions for

## I. Laboratory workbench



## II. Fume hood



## III. Safety cabinet



## IV. Integration into laboratory equipment



✚ Customised solutions



Photo: The SmartEdge classic KN 001 mounted on a HPLC-system.

# SmartIntegrate | The Configuration










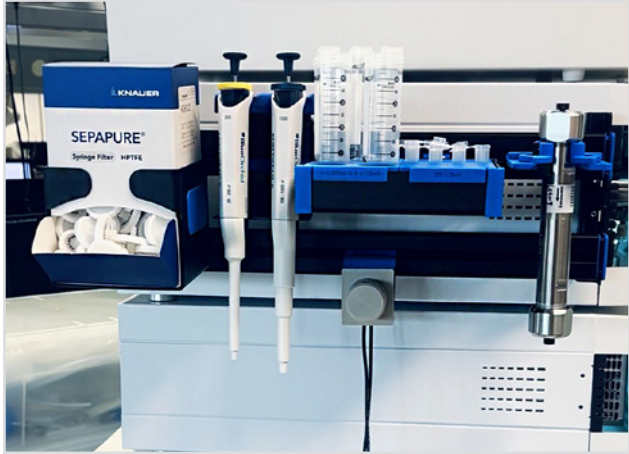
<p><b>1. Selection of workplace:</b> Media cell/work bench, Fume hood, Safety cabinet</p>			
<p><b>2. Selection of the SmartIntegrate Version:</b> SmartRail, SmartFrame, SmartEdge</p>			
<p><b>3. Selection of the modules:</b> Holders and storage box and storage box inserts (e.g. refer to catalogue „Modules“)</p>			



Photo: The SmartEdge classic KN 001 mounted on a HPLC-system.

# KNAUER SmartEdge

## SmartEdge classic KN 001



SmartEdge classic KN 001, mounted on a KNAUER HPLC-system, Demonstrators and modules are not included in the scope of delivery.

The SmartEdge classic KN 001 was developed for use with KNAUER enclosures. It consists of two powder-coated stainless steel edge components, into which the anodized aluminum slot rails can be hung. All modules are fully compatible with the SmartEdge.

The SmartEdge classic includes the following components:

- 2 x powder-coated stainless steel edge components
- 1 x slot rail without side handles



SmartEdge classic KN 001, without equipment, mounted on a KNAUER HPLC-system.

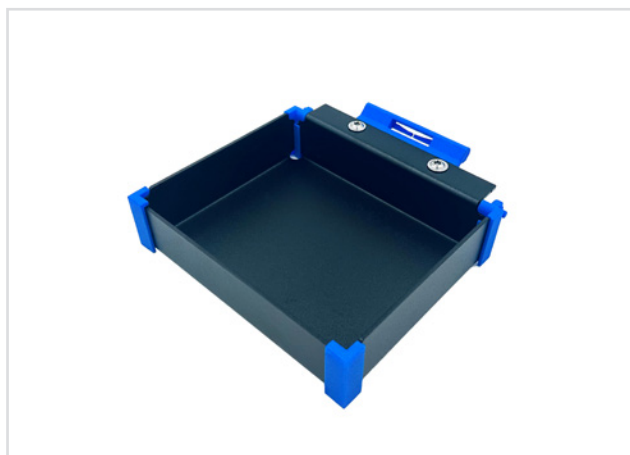


SmartEdge classic KN 001, not mounted.

Item	Type	PU	Item no.	Price in EUR
SmartEdge KN 001	classic	1	04006	249,00
Slot rail for SmartEdge KN 001		1	04301	54,99

# Modules

## Storage box



The module is the basis for storing and fixing various smaller laboratory equipment. The storage box can hold a maximum of two storage box inserts, which can be arranged and combined as required. Alternatively, the storage box can also be used without storage box inserts.

Item	Type	PU	Item no.	Price in EUR
Storage box	for 2 storage box inserts	1	81149	69,99

## Storage box insert – for microreaction vessels



The module can be inserted as required into the storage box and enables easy storage and fixation of microreaction vessels.

Storage box is not included in the scope of delivery.

Item	Type	PU	Item no.	Price in EUR
Storage box insert – for microreaction vessels	32 x 0,5 ml	1	81153	64,99
Storage box insert – for microreaction vessels	20 x 2 ml	1	81154	64,99

## Storage box insert – for centrifuge tubes

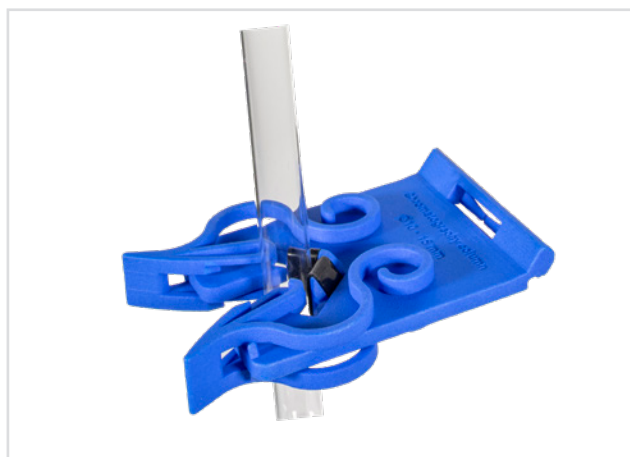


The module can be inserted as required into the storage box and enables easy storage and fixation of centrifuge tubes.

Storage box is not included in the scope of delivery.

Item	Type	PU	Item no.	Price in EUR
Storage box insert – for centrifuge tubes	6 x 15 ml, 4 x 50 ml	1	81155	64,99

## Holder for chromatography column



The module allows effortless attachment of chromatography columns. The bracket adjusts to the column circumference via a snap-in mechanism to provide a secure fit. If the length of the suspended equipment exceeds 15 cm, we recommend the use of additional holder modules, stacked in the required number, to ensure the stability of the set-up. Both the outside of the chromatography column and the silicone covers of the chromatography column holders must be clean and free of dust and grease.

Chromatography column is not included in the scope of delivery.

Item	Type	PU	Item no.	Price in EUR
Holder for chromatography column	Ø 5 - 10 mm	1	81159	69,99
Holder for chromatography column	Ø 10 - 15 mm	1	81152	69,99
Holder for chromatography column	Ø 15 - 25 mm	1	81160	69,99
Holder for chromatography column	Ø 25 - 35 mm	1	81161	69,99
Holder for chromatography column	Ø 35 - 46 mm	1	81162	69,99
Holder for chromatography column	Ø 46 - 56 mm	1	81163	79,99

### Holder for KNAUER Valve Drive

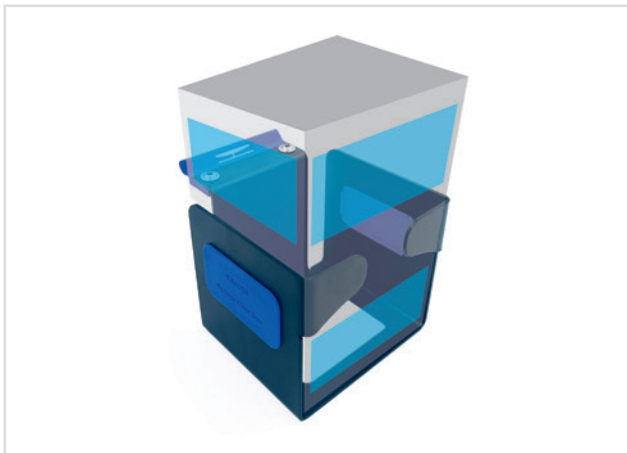


The module enables the safe attachment of a KNAUER Valve Drive.

Valve Drive is not included in the scope of delivery.

Item	Type	PU	Item no.	Price in EUR
Holder for KNAUER Valve Drive		1	81148	79,99

### Holder for KNAUER syringe filter box



The module enables the safe attachment of a KNAUER syringe filter box.

Syringe filter box is not included in the scope of delivery.

Item	Type	PU	Item no.	Price in EUR
Holder for KNAUER syringe filter box		1	81141	79,99

## Holder for laboratory screw top bottles

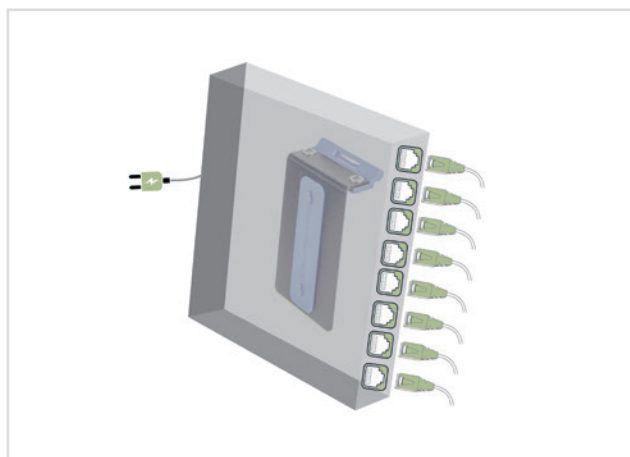


The module enables easy attachment of laboratory screw top bottles. The module is equipped with a rotatable locking ring, which provides additional protection for the laboratory screw top bottles against falling out.

Laboratory screw top bottle is not included in the scope of delivery.

Item	Type	PU	Item no.	Price in EUR
Holder for laboratory screw top bottles	100 - 1000 ml (GL45)	1	81151	64,99

## Holder for NETGEAR® ProSAFE GS108



The module enables the safe attachment of a NETGEAR® ProSAFE GS108.

NETGEAR® ProSAFE GS108 is not included in the scope of delivery.

Item	Type	PU	Item no.	Price in EUR
Holder for NETGEAR® ProSAFE GS108		1	81140	69,99

## Holder for pipettes



The module allows easy attachment of up to two pipettes with hook. The pipette tips are not affected and therefore not contaminated.

Pipettes are not included in the scope of delivery.

Item	Type	PU	Item no.	Price in EUR
Holder for pipettes	for 2 pipettes with hook	1	81150	64,99

## Holder for various KNAUER accessories



The module enables the safe attachment of various KNAUER accessories.

KNAUER accessories are not included in the scope of delivery.

Item	Type	PU	Item no.	Price in EUR
Holder for various KNAUER accessories		1	81139	59,99

# Customising

Better Basics Laborbedarf offers an unparalleled approach to laboratory workstation organisation with its customisable and modular solutions. Below is an overview of how our customisation services span both the SmartRack® and SmartIntegrate product lines:

## 1. Customisation of the SmartRack®

### For the SmartRack®

Our SmartRack® system is fully customisable to meet the specific requirements of your workspace. The dimensions of the SmartRack® can be individually adapted to the size of your equipment and workflows, ensuring seamless integration into your laboratory workstation. At the same time, the modular compatibility and reliability of your tailor-made SmartRack® are guaranteed through appropriately dimensioned slot rails. From compact configurations to larger frames, we enhance the organisation and efficiency of your laboratory.

## 2. Customisation of SmartIntegrate Products

### a) Bespoke SmartFrame for Fume Hoods

The SmartFrame optimises the organisation within fume hoods, offering a structured and safe arrangement for laboratory glassware, tools, and equipment. Custom-built SmartFrames provide a perfect fit for your specific workspace.

### b) Tailored SmartRail for Lab Benches

SmartRails bring adaptability and precision to your laboratory benches. Designed for both high-throughput workflows and compact setups, they ensure reduced clutter and enhanced efficiency. Each SmartRail is tailored to your preferred length and mounting specifications.

### c) Custom Solutions for Safety Cabinets

For safety cabinets, our custom solutions include integrated SmartRails, SmartFrames and SmartEdges designed to maximise space utilisation while supporting your workflows. Each component is built to ensure easy cleaning and adherence to safety regulations.

## 3. Custom Modules

### Tailored for any Laboratory Equipment

Using advanced 3D printing technology, we create modules and holders in any shape or size to fit your laboratory equipment. From pipette holders to mounts for specialised glassware, our bespoke designs cater to your unique requirements. Our rapid prototyping process ensures swift delivery of tailored solutions.

### Why Choose Better Basics for Customisation?

- 1. Precision Craftsmanship:** Each component is tailored to your exact specifications, guaranteeing optimal performance and seamless integration.
- 2. Fast Delivery:** Our in-house design and manufacturing teams ensure swift turnaround from concept to delivery.
- 3. Transparent Pricing:** Costs for customisation are agreed upon in advance, providing clarity and control.
- 4. Scalability:** Whether expanding an existing laboratory or building a new one, our products adapt to meet your growing needs.

### Transform Your Laboratory Workspace

With Better Basics Laborbedarf, your laboratory can benefit from customised SmartRack® or SmartIntegrate products.

Visit [customising.better-basics-laborbedarf.de](https://customising.better-basics-laborbedarf.de) or contact our team today to unlock the full potential of your laboratory space.

This concise yet comprehensive approach ensures your laboratory benefits from enhanced efficiency, organisation, and safety—all tailored to your specific needs.

## Examples for realised customisations

### Special frame sizes

#### SmartRack® frame - customisable in width as well as height



#### SmartRack® frame - extra wide

For a special requirement we manufactured an extra wide frame of the SmartRack®. Due to the width, this SmartRack® makes optimal use of the working space in our customer's laboratory.

### Special module sizes

#### Holder for multiple glassware



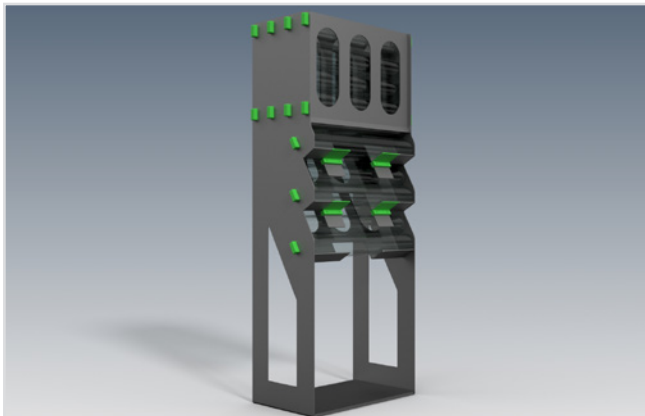
#### Double holder for glassware with ST10

For a project, a customer needed a double holder for glassware ST10. The module allows glassware with standard ground joint ST10 to be easily hung next to each other. The specially shaped recess prevents the glassware from falling out.

Of course, adaptations of this kind are also conceivable for other modules, e.g. storage boxes in individual sizes.

### Special laboratory equipment

#### Dispenser for cylindrical Petri dish multi-packs



For a globally operating biotechnology company, a dispenser for cylindrical Petri dish multi-packs was developed.

The dispenser not only enables easy removal of the packs but also provides a quick overview of the remaining stock.

# Item Overview

## KNAUER SmartEdge

Item	Type	Item no.	PU	Price in EUR	Page
SmartEdge KN 001	classic	04006	1	249,00	7
Slot rail for SmartEdge KN 001		04301	1	54,99	7

## Modules

Item	Type	Item no.	PU	Price in EUR	Page
Storage box	for 2 storage box inserts	81149	1	69,99	8
Storage box insert – for microreaction vessels	32 x 0,5 ml	81153	1	64,99	8
Storage box insert – for microreaction vessels	20 x 2 ml	81154	1	64,99	8
Storage box insert – for centrifuge tubes	6 x 15 ml, 4 x 50 ml	81155	1	64,99	9
Holder for chromatography column	Ø 5 - 10 mm	81159	1	69,99	9
Holder for chromatography column	Ø 10 - 15 mm	81152	1	69,99	9
Holder for chromatography column	Ø 15 - 25 mm	81160	1	69,99	9
Holder for chromatography column	Ø 25 - 35 mm	81161	1	69,99	9
Holder for chromatography column	Ø 35 - 46 mm	81162	1	69,99	9
Holder for chromatography column	Ø 46 - 56 mm	81163	1	79,99	9
Holder for KNAUER Valve Drive		81148	1	79,99	10
Holder for KNAUER syringe filter box		81141	1	79,99	10
Holder for laboratory screw top bottles	100 - 1000 ml (GL45)	81151	1	64,99	11
Holder for NETGEAR® ProSAFE GS108		81140	1	69,99	11
Holder for pipettes	for 2 pipettes with hook	81150	1	64,99	12
Holder for various KNAUER accessories		81139	1	59,99	12

Net prices plus statutory VAT. | Valid from 01.01.2026

The general terms and conditions of Better Basics Laborbedarf GmbH apply.

# Technical Information

## Technical information:

- All products are washable with water and mild detergent.
- In addition all components can be wiped with alcohol-based disinfectants.
- The plastics and metals used are 100% recyclable.
- Our products are autoclavable up to 134 °C and 3 bar.
- The plastic elements are resistant to heat deformation under normal laboratory conditions.
- To gently clean the anodised aluminium rail, we recommend using a pH-neutral hand-washing detergent. Ensure that the hand wash detergent is odourless and contains no perfumes, greases or additives. Clean the slot rail by hand and rinse thoroughly with clean water.

## Note on joint tolerances for ST14:

- Maximum outside diameter at the narrowest point of the cone joint: 17.2 mm (larger diameters are too wide for the holder and cannot be held)
- Minimum outer diameter at the widest point of the cone joint: 18.0 mm (smaller diameters are too narrow for the holder and would fall out)

## Note on joint tolerances for ST29:

- Maximum outside diameter at the narrowest point of the cone joint: 31.4 mm (larger diameters are too wide for the holder and cannot be held)
- Minimum outer diameter at the widest point of the cone joint: 32.8 mm (smaller diameters are too narrow for the holder and would fall out)

**IMPORTANT TO NOTE:** The products of the SmartIntegrate line, the SmartRack® and SmartRack® mini as well as the SmartCase and SmartStand are not suitable for the permanent storage of hazardous substances.

We reserve the right to make technical changes, material or model changes, errors and misprints excepted. If you have any further questions, please do not hesitate to contact us at [contact@better-basics.de](mailto:contact@better-basics.de).

## For more detailed information, please visit our website:

Functionality of SLS 3D printing:	<a href="http://www.sls-3d-printing.better-basics-laborbedarf.de">www.sls-3d-printing.better-basics-laborbedarf.de</a>
Resistance to UV light:	<a href="http://www.uv-resistance.better-basics-laborbedarf.de">www.uv-resistance.better-basics-laborbedarf.de</a>
Resistance to aggressive media:	<a href="http://www.material-resistance.better-basics-laborbedarf.de">www.material-resistance.better-basics-laborbedarf.de</a>
Sustainability and design-efficient manufacturing:	<a href="http://www.sustainability.better-basics-laborbedarf.de">www.sustainability.better-basics-laborbedarf.de</a>



Photo: Building of the Better Basics Laborbedarf GmbH in Dresden

## YOU ARE INTERESTED IN OUR PRODUCTS OR YOU HAVE FURTHER QUESTIONS?

Get in touch with us:

[contact@better-basics.de](mailto:contact@better-basics.de)

You can also find more information and news about our product innovations at

[www.Better-Basics-Laborbedarf.de](http://www.Better-Basics-Laborbedarf.de)

### **Better Basics Laborbedarf GmbH**

Loebtauer Str. 69

01159 Dresden

Germany

T: +49 (0) 178 9617 577 (Direct customers)

T: +49 (0) 176 6233 8026 (Sales partners)

E: [contact@better-basics.de](mailto:contact@better-basics.de)

W: [www.Better-Basics-Laborbedarf.de](http://www.Better-Basics-Laborbedarf.de)

### **Our request to you**

Our products such as our SmartRack® and our SmartIntegrate products are only as good as their users. With our roots in the Leibniz Institute for Polymer Research Dresden, our company Better Basics Laborbedarf stands for the tradition of "Made in Germany" quality. We feel in multiple aspects committed to this quality label for German companies, which stands for high innovative strength. Even beyond our product catalogue, the same applies for us at Better Basics: Just contact us if you have ideas for extensions or improvements or if you notice something in your daily laboratory routine that we should optimise right away.

We want to create the best possible working environment for you in the laboratory and we are grateful for any comments and inspiration. We can jointly shape the future of laboratory work by cooperating with scientists and researchers. Just like you, we're always looking for a way to make our world a little better every day.

### **Impress:**

Better Basics Laborbedarf GmbH  
Loebtauer Str. 69, G-01159 Dresden

E-Mail: [info@better-basics.de](mailto:info@better-basics.de)

CEO: Mario Schneider

Commercial register: HRB 39524; Register court: Amtsgericht Dresden

VAT registration number: DE327508812

