



# BETTER BASICS

LABORBEDARF



1<sup>ST</sup> QUARTER 2025



## Product catalogue

SmartIntegrate

Unlock Your Lab Potential

# Table of Contents

Your Advantage in Everyday Laboratory Work.....	3
SmartIntegrate   Integrative Organizational Solutions.....	6
The configuration.....	6
Solutions for work benches.....	7
Solutions for fume hoods.....	15
Solutions for safety cabinets.....	20
Solutions for integration into laboratory equipment.....	23
Additional accessories.....	24
Customizing.....	25
Item overview.....	27
Technical information.....	29

# Your Advantage in Everyday Laboratory Work

## Better Basics Laborbedarf – Your Advantage in Everyday Laboratory Work

Better Basics Laborbedarf optimises laboratories and their workspaces with innovative, award-winning organisational systems. We support our customers in creating the best possible working environment for their laboratory staff, helping to unlock the full potential of their laboratories. This approach ensures consistently high quality, efficiency, and process stability in the lab while providing a safe, ergonomic workplace with satisfied employees.

### Enhancing Employee Satisfaction

Our SmartRack® and SmartIntegrate product families offer a comprehensive system to optimise laboratory workflows. With over 100 modular solutions, they not only ensure order but also noticeably improve working conditions. Enhanced ergonomics, reduced movement paths, and clearly structured workstations increase both efficiency and employee satisfaction. Safe and organised environments reduce stress and promote job satisfaction. Furthermore, they demonstrably contribute to improved workplace safety and occupational health through thoughtful placement and ease of use.

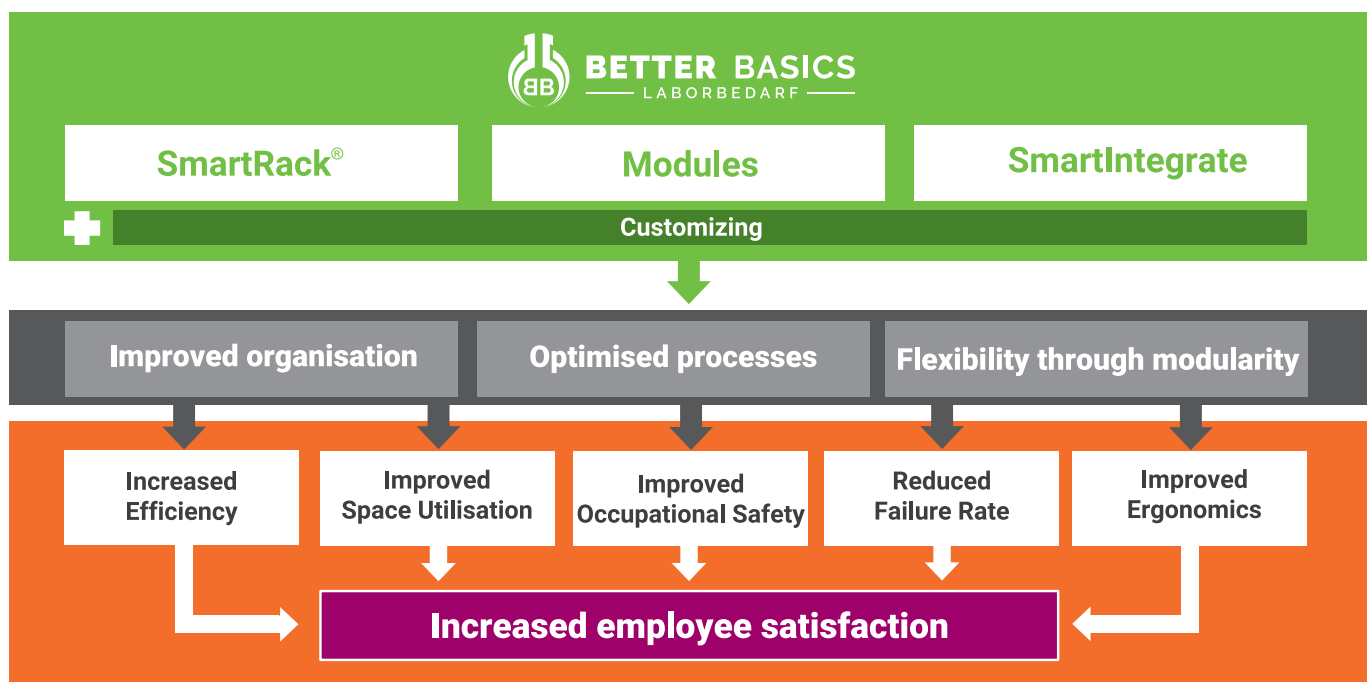
### A System for Sustainable Process Improvement

Our product families are designed to standardise workflows and save time. The modular concept of SmartRack® and SmartIntegrate allows for flexible adaptations to any laboratory environment – from safety workbenches to large open-plan labs. These systems not only optimise space utilisation but also increase efficiency by an average of 30% and save up to 80% space. With a wide range of modules and accessories, they offer customised solutions for every need.

### Efficient, Safe, and Satisfying

For decision-makers and managers, SmartRack® and SmartIntegrate ensure process stability and economical resource use. At the same time, these systems provide innovation managers and organisational developers with the ideal basis for forward-looking workplace designs. For laboratory staff, this means fewer errors thanks to well-structured work areas, a more relaxed working environment, and often the ability to finish earlier due to significantly improved workflows.

**Discover how Better Basics Laborbedarf can transform your everyday laboratory work – for more efficient processes, satisfied employees, and excellent results.**



## The product overview of Better Basics

### ▶ SmartRack®, the mobile solution for: laboratory workbench, fume hood, safety cabinet



#### + Customised solutions

### ▶ SmartIntegrate, the integrative solutions for

#### I. Laboratory workbench



#### II. Fume hood



#### III. Safety cabinet



#### IV. Integration into laboratory equipment



#### + Customised solutions

### ▶ Modules

- Currently, more than 100 modules
- All modules in the Better Basics catalogue can be used universally in all SmartRack® and SmartIntegrate solutions
- Customized modules can be developed based on the specific customer needs, all customized modules can be used in all SmartRack® and SmartIntegrate solutions



#### + Customised solutions



# SmartIntegrate – For Optimal Integration

The SmartIntegrate product line offers organizational solutions that integrate seamlessly into your existing lab infrastructure. The SmartFrame, for example, can be easily integrated into any fume hood, while the SmartRail provides additional storage space on media cells and laboratory benches. The SmartEdge optimises organisation in biosafety cabinets.

All SmartIntegrate organisational systems benefit from the compatibility of all Better Basics modules with these SmartIntegrate organisational solutions, ensuring intuitive and safe usage.

▶ **SmartIntegrate**, the integrative solutions for

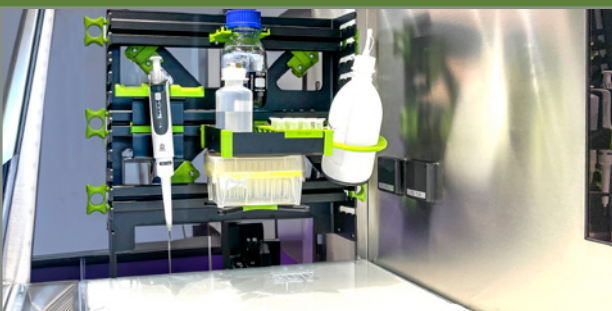
## I. Laboratory workbench



## II. Fume hood



## III. Safety cabinet



## IV. Integration into laboratory equipment



✚ Customised solutions



Photo: The WALDNER SmartRail WA 003, mounted in a WALDNER SCALA workbench

# SmartIntegrate | The Configuration

**1. Selection of workplace**  
Media cell / workbench,  
fume hood, safety cabinet



**2. Selection of the manufacturer**  
WALDNER, Wesemann,  
Köttermann, MERCI,  
BERNER etc.



**3. Selection of the SmartIntegrate Version:**  
SmartRail, SmartFrame, SmartEdge



**4. Selection of the modules:**  
holders and storage box  
and storage box inserts  
(e.g. refer to catalogue "modules")



SmartFrame WA 002 in a WALDNER SCALA fume hood

## SmartRail WA 001 - magnetic fixation



*SmartRail 300 WA 001 attached to the WALDNER functional rail, glassware and modules not included in scope of delivery*

The SmartRail WA 001 has been specifically developed for use on WALDNER laboratory furniture, particularly for workbenches with shelves that have the WALDNER functional rail, such as for instance the WALDNER Simply Flex Bench. The product consists of a black anodised aluminium slot rail and side brackets made of PA12 and stainless steel, providing secure magnetic fixation. The SmartRail WA 001 can be additionally equipped with a SmartLock slide locking mechanism to prevent unintentional removal and ensure stable mounting on the WALDNER functional rail. The SmartLock is included in the scope of delivery. The versatile SmartRail offers flexible placement options in the laboratory. A larger number of SmartRails provides various module placement options and allows the laboratory environment to be tailored to specific requirements. All modules are fully compatible with this SmartRail.

*The modules and the equipment (glass appliances) are not included in the scope of delivery.*



*SmartRail 300 WA 001 attached to the WALDNER functional rail*



*SmartRail 300 WA 001, corner view*

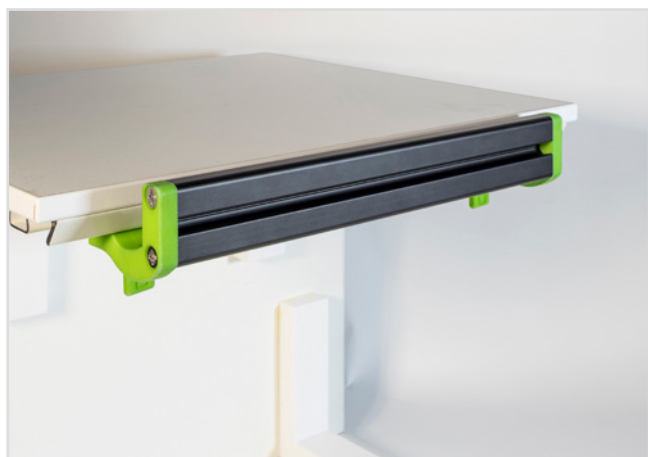
Item	Type	PU	Item no.	Price in EUR
SmartRail WA 001	300 mm	1	03002	69,99
SmartRail WA 001	600 mm	1	03003	89,99
SmartRail WA 001	900 mm	1	03004	109,99
SmartRail WA 001	1200 mm	1	03005	129,99
SmartRail WA 001	1500 mm	1	03006	149,99

## SmartRail WA 002 - Twist lock



SmartRail 300 WA 002, mounted in a demonstrator, glassware, demonstrator-table and modules not included in scope of delivery

The SmartRail WA 002 has been specifically developed for use on WALDNER laboratory furniture, particularly for workbenches with shelves that have the WALDNER functional rail, such as for instance the WALDNER Simply Flex Bench. The product consists of a black anodised aluminium slot rail and side brackets made of PA12 and stainless steel, equipped with a robust twist lock that ensures stable mounting on the WALDNER functional rail. The versatile SmartRail offers flexible placement options in the laboratory. A larger number of SmartRail provides various module placement options and allows the laboratory environment to be tailored to specific requirements. All modules are fully compatible with this SmartRail.



SmartRail 300 WA 002, on a WALDNER functional rail, demonstrator table not included in the scope of delivery



SmartRail 300 WA 002, corner view

Item	Type	PU	Item no.	Price in EUR
SmartRail WA 002	300 mm	1	03007	79,99
SmartRail WA 002	600 mm	1	03008	99,99
SmartRail WA 002	900 mm	1	03009	119,99
SmartRail WA 002	1200 mm	1	03010	139,99
SmartRail WA 002	1500 mm	1	03011	159,99



## SmartRail WA 003 – Waldner clamp



SmartRail 300 WA 003 mounted at a WALDNER SCALA work bench, glassware and modules not included in scope of delivery

The SmartRail WA 003 has been specifically developed for use with WALDNER laboratory furniture, particularly for workbenches with classical functional rail and shelves with classical functional rail of the SCALA service spine series. The product consists of a black anodised aluminium slot rail and side brackets made of PA12 and stainless steel, equipped with the original WALDNER clamp adapter to ensure stable mounting on the slot and shelves with the classical WALDNER functional rail. The versatile SmartRail offers flexible placement options in the laboratory. A larger number of SmartRail provides various module placement options and allows the laboratory environment to be tailored to specific requirements. All modules are fully compatible with this SmartRail.



SmartRail 300 WA 003, close up, mounted at a WALDNER SCALA work bench



SmartRail 300 WA 003, corner view

Item	Type	PU	Item no.	Price in EUR
SmartRail WA 003	300 mm	1	03012	79,99
SmartRail WA 003	600 mm	1	03013	99,99
SmartRail WA 003	900 mm	1	03014	119,99
SmartRail WA 003	1200 mm	1	03015	139,99
SmartRail WA 003	1500 mm	1	03016	159,99

## SmartRail WE 001



SmartRail WE001, mounted in a Wesemann work bench  
Demonstrators are not included in the scope of delivery

The SmartRail WE 001 has been specifically developed for use with Wesemann workbenches featuring accessory slots. The product consists of a black anodised aluminium slot rail and side brackets made of PA12 and stainless steel, equipped with a practical snap-in function to ensure stable mounting on the front slot of the media channels. The versatile SmartRail offers flexible placement options in the laboratory. A larger number of SmartRail provides various module placement options and allows the laboratory environment to be tailored to specific requirements. All modules are fully compatible with SmartRail.



SmartRail WE 001, mounted in a Wesemann work bench



SmartRail WE 001, corner view

Item	Type	PU	Item no.	Price in EUR
SmartRail WE 001	300 mm	1	03033	69,99
SmartRail WE 001	600 mm	1	03034	89,99
SmartRail WE 001	900 mm	1	03035	109,99
SmartRail WE 001	1200 mm	1	03036	129,99
SmartRail WE 001	1500 mm	1	03037	149,99

## SmartRail WE 002

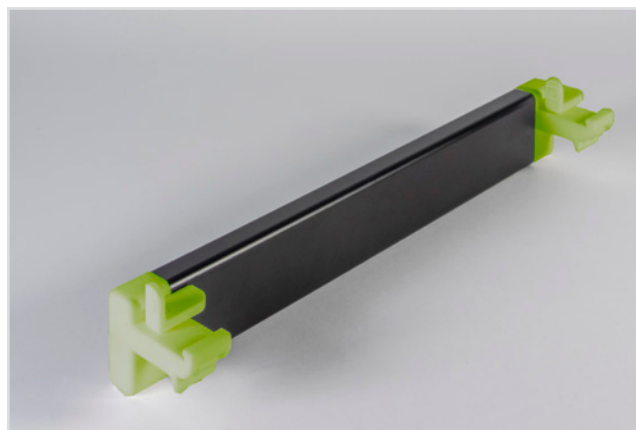


*SmartRail WE 002, mounted in a Wesemann work bench  
Glassware is not included in the scope of delivery*

The SmartRail WE 002 has been specifically developed for use with Wesemann workbenches featuring accessory slots. The product consists of a black anodised aluminium slot rail and side brackets made of PA12 and stainless steel, equipped with a practical snap-in function and an additional twist lock to ensure stable mounting on the front slot of the media channels. The versatile SmartRail offers flexible placement options in the laboratory. A larger number of SmartRail provides various module placement options and allows the laboratory environment to be tailored to specific requirements. All modules are fully compatible with SmartRail.



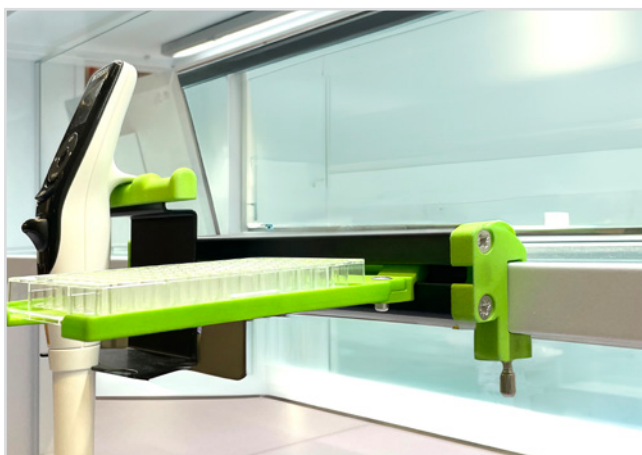
*SmartRail WE 002, mounted in a Wesemann work bench*



*SmartRail WE 002, corner view from behind*

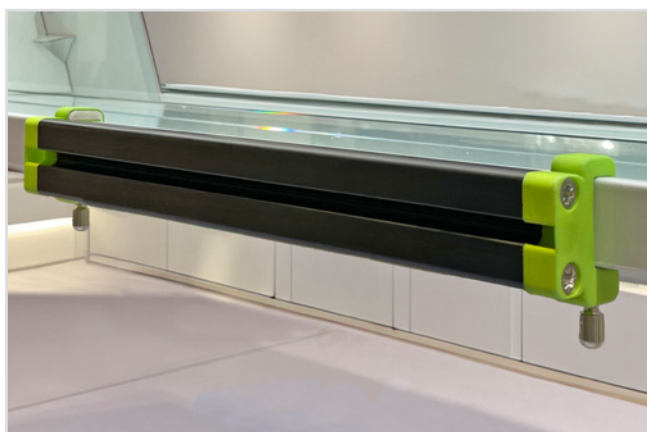
Item	Type	PU	Item no.	Price in EUR
SmartRail WE 002	300 mm	1	03038	79,99
SmartRail WE 002	600 mm	1	03039	99,99
SmartRail WE 002	900 mm	1	03040	119,99
SmartRail WE 002	1200 mm	1	03041	139,99
SmartRail WE 002	1500 mm	1	03042	159,99

## SmartRail KO 001 – Screw Clamp

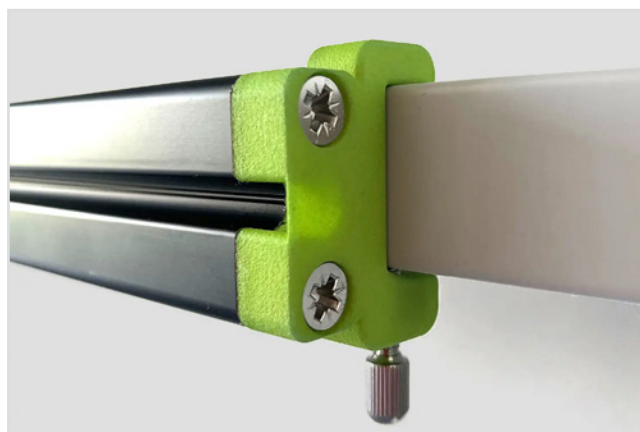


SmartRail KO 001, mounted in a KÖTTERMANN work bench  
Demonstrators are not included in scope of delivery

The SmartRail KO 001 has been specifically developed for use with Koettermann laboratory furniture, particularly for workbenches with Koettermann shelves. The product consists of a black anodised aluminium slot rail and side brackets made of PA12 and stainless steel, equipped with a robust screw clamp to ensure stable mounting on the Koettermann shelves. The versatile SmartRail offers flexible placement options in the laboratory. A larger number of SmartRail provides various module placement options and allows the laboratory environment to be tailored to specific requirements. All modules are fully compatible with SmartRail.



SmartRail KO 001 mounted, without equipment

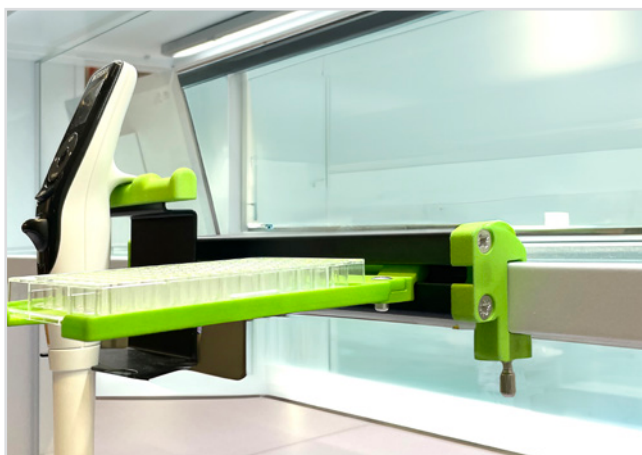


SmartRail KO 001, close up

Item	Type	PU	Item no.	Price in EUR
SmartRail KO 001	300 mm	1	03018	79,99
SmartRail KO 001	600 mm	1	03019	99,99
SmartRail KO 001	900 mm	1	03020	119,99
SmartRail KO 001	1200 mm	1	03021	139,99
SmartRail KO 001	1500 mm	1	03022	159,99

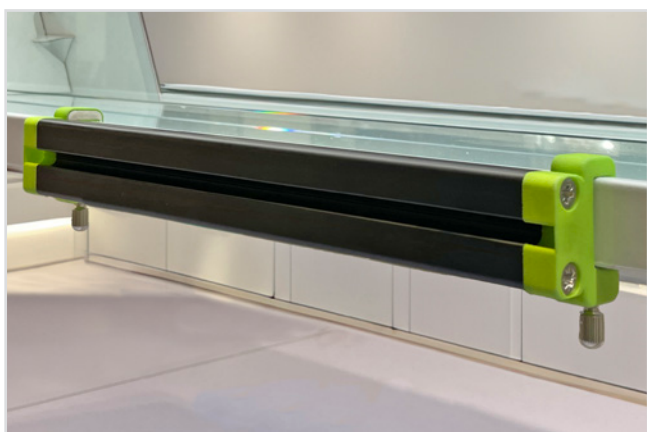


## SmartRail ME 001

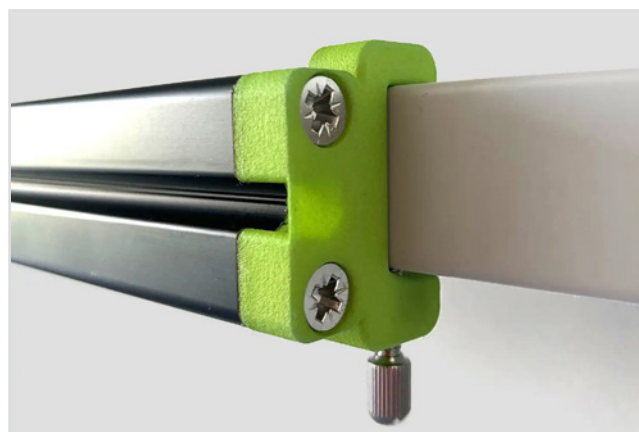


*SmartRail ME 001, mounted in a MERCI work bench  
Demonstrators are not included in scope of delivery*

The SmartRail ME 001 has been specifically developed for use with MERCI laboratory furniture, particularly for workbenches with MERCI shelves. The product consists of a black anodised aluminium slot rail and side brackets made of PA12 and stainless steel, equipped with a robust screw clamp to ensure stable mounting on the MERCI shelves. The versatile SmartRail offers flexible placement options in the laboratory. A larger number of SmartRail provides various module placement options and allows the laboratory environment to be tailored to specific requirements. All modules are fully compatible with SmartRail.



*SmartRail KO 001 mounted, without equipment*



*SmartRail KO 001, close up*

Item	Type	PU	Item no.	Price in EUR
SmartRail ME 001	300 mm	1	03054	79,99
SmartRail ME 001	600 mm	1	03055	99,99
SmartRail ME 001	900 mm	1	03056	119,99
SmartRail ME 001	1200 mm	1	03057	139,99
SmartRail ME 001	1500 mm	1	03058	159,99

## SmartRail WM 001



SmartRail WM 001 mounted in a work bench  
Demonstrators are not included in scope of delivery

The SmartRail WM 001 is an innovative solution for the effective organization of laboratory workspaces. This specially designed slot rail is made of black anodised aluminium and is intended for secure mounting on walls or vertical surfaces using screws. At the ends (or possibly in the middle of the rail), there are screw mounts made of PA12 and possibly stainless steel, through which two screws are used to ensure stable fixation of the rail. Since the type and length of screws depend on the nature of the surface, the length of the rail, and the planned use of modules, we kindly ask you to provide us with the desired rail length, the material of the surface, and the type and extent of the planned rail usage. This ensures that the mounting is optimally tailored to your specific requirements.

Components of the SmartRail WM 001:

- Anodised aluminium slot rail
- Two or more sets of mounting materials (consisting of PA12 and possibly stainless steel screw mounts, as well as appropriate mounting hardware) for installation

The SmartRail WM 001 is compatible with all modules of the SmartRack® product family, allowing for flexible and customizable placement of these modules within the slot rail. This solution not only frees up valuable space in the laboratory but also significantly enhances organization and efficiency.

Item	Type	PU	Item no.	Price in EUR
SmartRail WM 001	300 mm	1	03048	79,99
SmartRail WM 001	600 mm	1	03049	99,99
SmartRail WM 001	900 mm	1	03050	119,99
SmartRail WM 001	1200 mm	1	03051	139,99
SmartRail WM 001	1500 mm	1	03052	159,99

## SmartFrame elite WA 001



SmartFrame elite WA 001, mounted on a lab stand system, lab stand system, modules and equipment not included in the scope of delivery

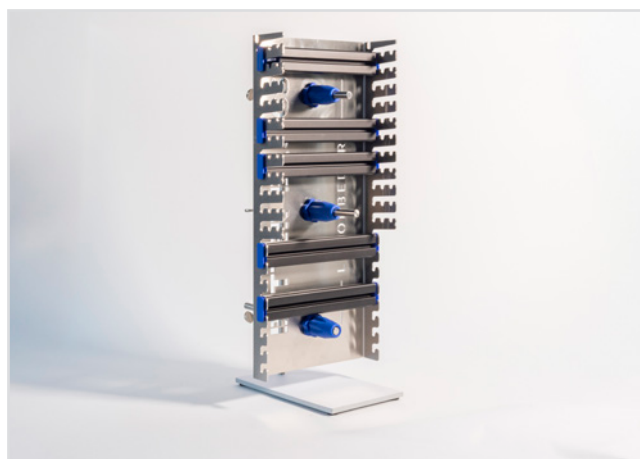
The SmartFrame elite WA 001 was developed for use in the fume hood series WALDNER Vision. It consists of a polished stainless steel frame. Using separately available stand locks, the SmartFrame can be moved away from the rear wall of the fume hood towards the sash on stand rods that are located in the standard stand rod holders in Vision series fume cupboards. (NOTE: Stand rods are not included in the scope of delivery). Every third slot rail holder on both sides of the SmartFrame elite has a recess at the front to make it easier to align the slot rails horizontally. All modules are fully compatible with this SmartFrame. The SmartFrame elite WA 001 comprises the following components:

- 1 x frame
- 5 x slot rails without handles

*If your laboratory fume cupboard is a custom-made design or an adaptation of the specified standard type, or if you use a different model of WALDNER fume cupboard, please contact us. We will gladly check compatibility and develop a tailored solution for you if needed. Upon request, we can manufacture the SmartFrame to precisely fit your requirements.*



SmartFrame elite WA 001 with blue modules, mounted on a lab stand system, modules, lab stand system and equipment not included in the scope of delivery



SmartFrame elite WA 001, mounted on a lab stand system, lab stand system not included in the scope of delivery

Item	Type	PU	Item no.	Price in EUR
SmartFrame WA 001	elite	1	05002	579,00

## SmartFrame elite WA 002



SmartFrame elite WA 002, in a WALDNER GFH fume hood front view, modules and equipment not included in the scope of delivery

If your laboratory fume cupboard is a custom-made design or an adaptation of the specified standard type, or if you use a different model of WALDNER fume cupboard, please contact us. We will gladly check compatibility and develop a tailored solution for you if needed. Upon request, we can manufacture the SmartFrame to precisely fit your requirements.

The SmartFrame elite WA 002 was developed for use in the Secuflow GFH fume hood series from WALDNER and can be positioned in the centre of the rear wall of the fume hood. It consists of a polished stainless steel frame. Using separately available stand locks, the SmartFrame can be moved away from the rear wall of the fume hood towards the sash on stand rods that are located in the standard stand rod holders in Secuflow GFH series fume cupboards. (NOTE: Stand rods are not included in the scope of delivery). Every third slot rail holder on both sides of the SmartFrame elite has a recess at the front to make it easier to align the slot rails horizontally. All modules are fully compatible with this SmartFrame. This SmartFrame elite WA 002 comprises the following components:

- 1 x frame
- 5 x slot rails without handles
- 2 x reducing disc for M10



SmartFrame elite WA 002 in a WALDNER GFH fume hood



SmartFrame elite WA 002, corner view, mounted on a lab stand system, lab stand system not included in the scope of delivery

Item	Type	PU	Item no.	Price in EUR
SmartFrame WA 002	elite	1	05013	579,00



## SmartFrame elite WA 003



SmartFrame elite WA 003, modules and equipment not included in the scope of delivery

If your laboratory fume cupboard is a custom-made design or an adaptation of the specified standard type, or if you use a different model of WALDNER fume cupboard, please contact us. We will gladly check compatibility and develop a tailored solution for you if needed. Upon request, we can manufacture the SmartFrame to precisely fit your requirements.

The SmartFrame elite WA 003 was developed for use in the WALDNER Secuflow RWI fume hood. It consists of a polished stainless steel frame. Using separately available stand locks, the SmartFrame can be moved away from the rear wall of the fume hood towards the sash on stand rods that are located in the standard lab stand holders in fume hoods of the SCALA and Vision series. (NOTE: Stand rods are not included in the scope of delivery). Every third slot rail holder on both sides of the SmartFrame elite has a recess at the front to make it easier to align the slot rails horizontally. All modules are fully compatible with this SmartFrame. This SmartFrame elite WA 003 comprises the following components:

- 1 x frame
- 5 x slot rails without handles



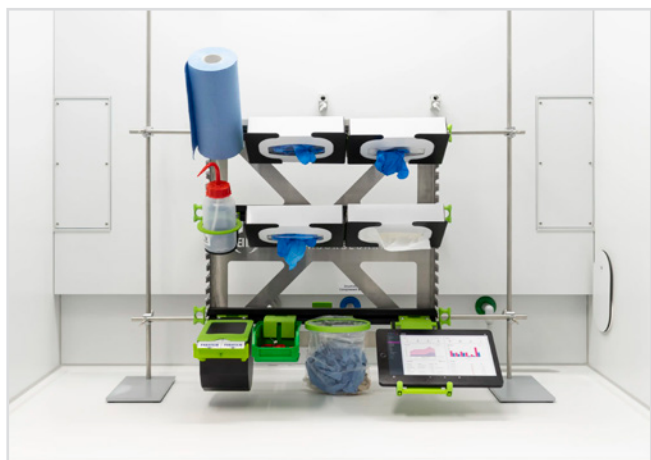
SmartFrame elite WA 003 front view, modules and equipment not included in the scope of delivery



SmartFrame elite WA 003, corner view

Item	Type	PU	Item no.	Price in EUR
SmartFrame WA 003	elite	1	05012	599,00

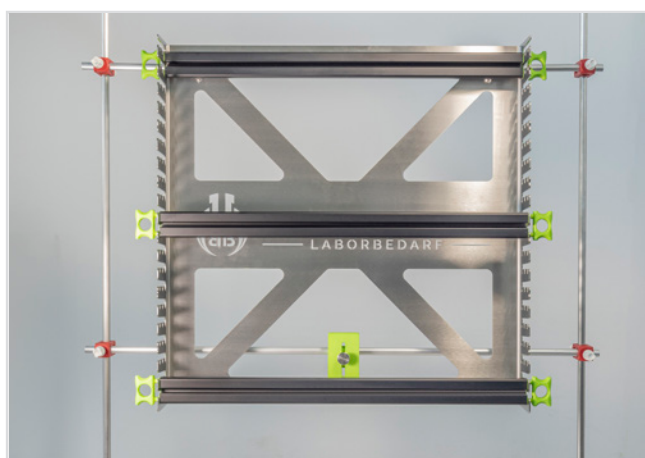
## SmartFrame elite MB 001



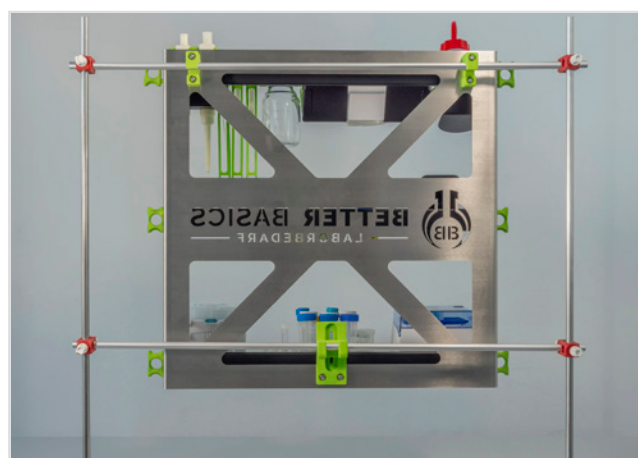
SmartFrame MB 001, front view, lab stand system, modules and equipment not included in the scope of delivery

The SmartFrame classic MB 001 is designed for use in fume hoods. It consists of an aluminium frame with a black epoxy-polyester based powder coating. The SmartFrame can be mounted on standard 12mm or 13mm lab stand system using PA12 brackets on the rear. This allows it to be mounted close to the back of the fume hood, free-standing in the fume hood or on the laboratory bench using a lab stand system, depending on the application. (NOTE: lab stand system rods are not included) Every third slot rail bracket on both sides of the SmartFrame classic has a recess at the front to make it easier to align the slot rails horizontally. All modules are fully compatible with this SmartFrame. The SmartFrame classic consists of the following components

- 1 x frame
- 3 x slot rails with handles
- 3 x PA12 universal upright brackets



SmartFrame elite MB 001, mounted on a lab stand system, lab stand system not included in the scope of delivery



SmartFrame elite MB 001, mounted on a lab stand system, view from behind, modules, lab stand system and equipment not included in the scope of delivery

Item	Type	PU	Item no.	Price in EUR
SmartFrame MB 001	primus mini	1	05008	319,00
SmartFrame MB 001	classic mini	1	05004	419,00
SmartFrame MB 001	primus	1	05007	449,00
SmartFrame MB 001	elite mini	1	05006	469,00
SmartFrame MB 001	classic	1	05003	549,00
SmartFrame MB 001	elite	1	05005	599,00

## SmartRail MB 001



The SmartRail MB 001 has been specifically developed for use with laboratory furniture featuring lab stand system of 12 mm or 13 mm. The product consists of a black anodised aluminium slot rail and side brackets made of PA12 and stainless steel, equipped with a sturdy screw clamp to ensure stable mounting on the support system. The versatile SmartRail offers flexible placement options in the laboratory. A larger number of SmartRail provides various module placement options and allows the laboratory environment to be tailored to specific requirements. All modules are fully compatible with this SmartRail.

*SmartRail 300 MB 001 mounted on a lab stand system in a fume hood, lab stand system, glassware and modules not included in scope of delivery*



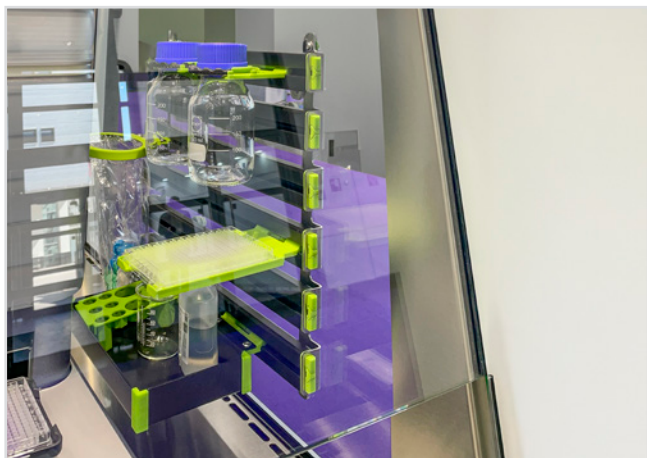
*SmartRail 300 MB 001, close up, SmartRail MB 001 mounted on a lab stand system in a fume hood, lab stand system not included in scope of delivery*



*SmartRail 300 MB 001, corner view*

Item	Type	PU	Item no.	Price in EUR
SmartRail MB 001	300 mm	1	03023	79,99
SmartRail MB 001	600 mm	1	03024	99,99
SmartRail MB 001	900 mm	1	03025	119,99
SmartRail MB 001	1200 mm	1	03026	139,99
SmartRail MB 001	1500 mm	1	03027	159,99

## SmartRail BE 001



SmartRail BE 001, mounted in a BERNER safety workbench, delivery without safety workbench, equipment, and individual modules.

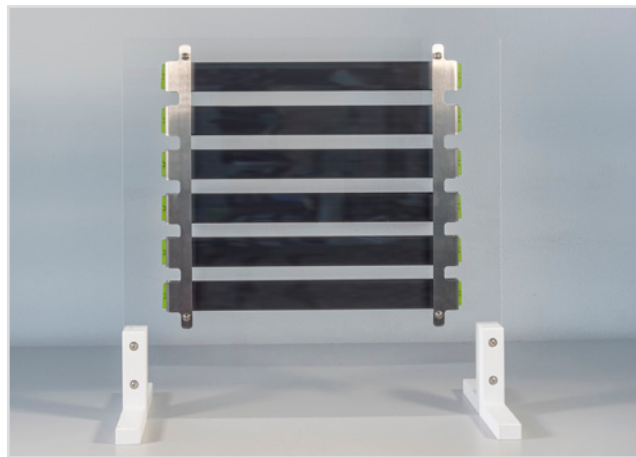
The SmartRail BE 001 has been developed for use in BERNER laboratory safety cabinet. It consists of two stainless steel slot rail carriers that are attached to the side panels of the laboratory safety cabinet using screws. The six anodised aluminium slot rails are firmly connected to the two slot rail carriers. In the case of an upgrade, the necessary replacement of the side panel of the safety cabinet will be carried out by the manufacturer. In the case of a new order, the modified side panel will be installed at the factory. In the slot rails, each with a width of 380 mm, all modules can be freely placed.

The SmartRail BE 001 includes the following components:

- 2 x stainless steel slot rail carriers
- 6 x permanently installed slot rails
- 8 x glass feed through sleeve segments
- 4 x sets of mounting materials (consisting of screws, washers, and nuts) for installation



SmartRail BE 001, oblique view, demonstrators and glassware and equipment are not included in scope of delivery



SmartRail BE 001, view from behind  
Demonstrators are not included in scope of delivery

Item	Type	PU	Item no.	Price in EUR
SmartRail BE 001		1	03001	239,00



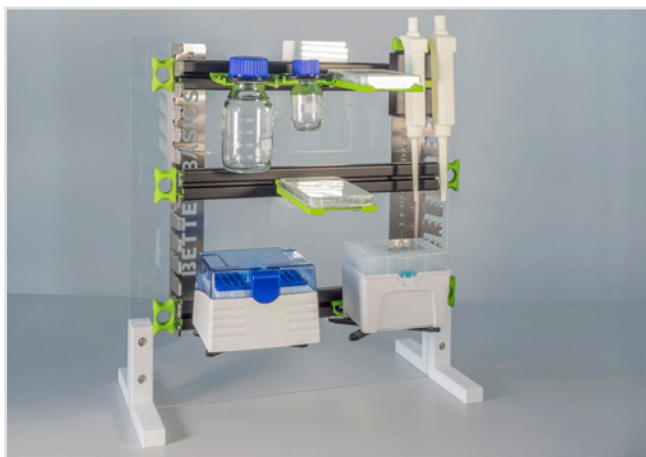
## SmartEdge BE 001



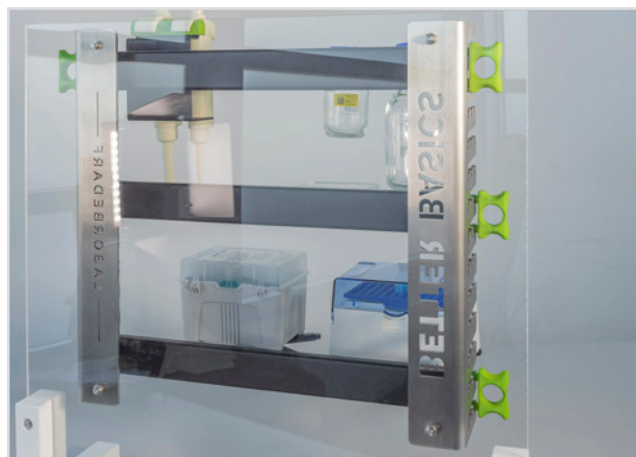
SmartEdge BE 001, mounted in a BERNER safety workbench, BERNER safety workbench not included in the delivery.

The SmartEdge elite BE 001 is designed for use in BERNER laboratory safety cabinets. It consists of two stainless steel L-profiles. The anodised aluminium slot rails are hooked into these L-profiles. In the case of an upgrade, the necessary replacement of the side panel of the safety cabinet will be carried out by the manufacturer. In the case of a new order, the modified side panel will be installed at the factory. To make it easier to align the slot rails horizontally, every third slot rail bracket on either side of the SmartEdge elite has a recess at the front. All modules are fully compatible with this SmartEdge. The SmartEdge elite is made up of the following components:

- 2 x stainless steel L-profiles
- 3 x mini slot rails, each with two side handles
- 8 x glass feed-through sleeve segments
- 4 x sets of mounting materials (consisting of screws, washers, and nuts) for installation



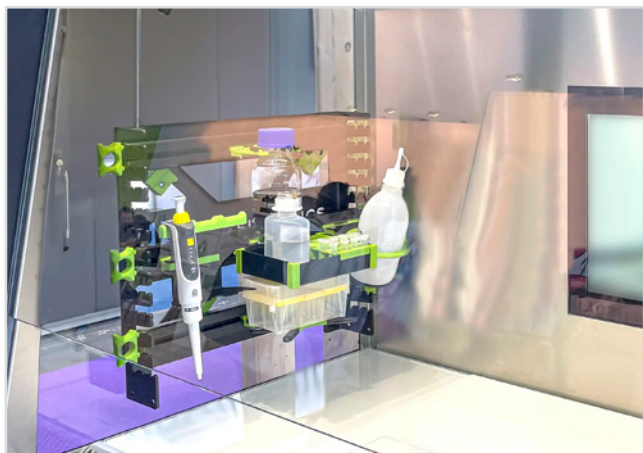
SmartEdge BE 001, mounted on an external demonstrator; demonstrator, modules, and laboratory equipment not included in the delivery.



SmartEdge BE 001 rear view, demonstrator, modules and laboratory equipment not included in delivery.

Item	Type	PU	Item no.	Price in EUR
SmartEdge BE 001	elite	1	04001	299,00

## SmartFrame mini BE 001

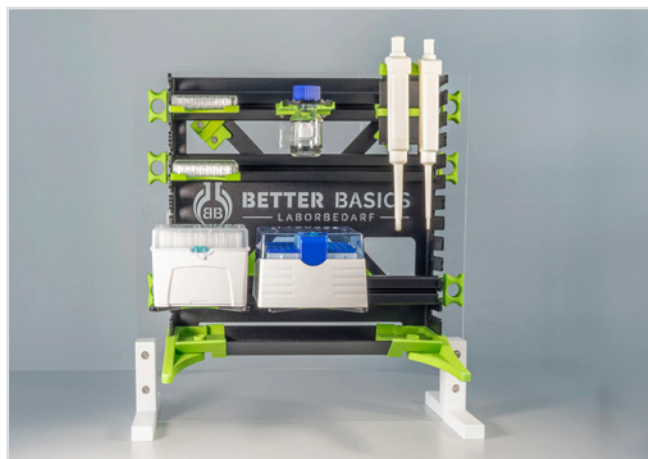


SmartFrame mini BE 001, mounted in a BERNER safety cabinet, BERNER safety cabinet not included in the delivery.

The SmartFrame classic mini BE 001 is designed for use in BERNER laboratory safety cabinets. It consists of an aluminium frame with a black epoxy-polyester-based powder coating. The SmartFrame is mounted to the side wall of the laboratory safety cabinet using the separately available wall mounting for SmartRack® or SmartFrame (Part No. 01617 or 01618). In the case of an upgrade, the necessary replacement of the side panel of the safety cabinet will be carried out by the manufacturer. In the case of a new order, the modified side panel will be installed at the factory. Every third slot rail holder on both sides of SmartFrame classic mini has a recess at the front to make it easier to align the slot rails horizontally. All modules are fully compatible with SmartFrame. The SmartFrame classic mini consists of the following components

- 1 x frame
- 3 x slot rails with handles

Note: The wall mounting for SmartRack® or SmartFrame, which is necessary for use, must be ordered separately (Part No. 01617 or 01618).



SmartRack® mini, mounted on a demonstrator; demonstrator, modules, and laboratory equipment not included in the delivery.



SmartRack® mini, mounted on a demonstrator, rear view. Demonstrator, modules, and laboratory equipment not included in delivery.

Item	Type	PU	Item no.	Price in EUR
SmartFrame BE 001	primus mini	1	05011	239,00
SmartFrame BE 001	classic mini	1	05009	339,00
SmartFrame BE 001	elite mini	1	05010	389,00

# Solutions for integration into laboratory equipment

## SmartEdge KN 001



SmartEdge KN 001, mounted on a KNAUER Device  
Demonstrators are not in scope of delivery

The SmartEdge classic KN 001 was developed for use with KNAUER enclosures with a height of 150 or 200 mm (KN 001) respectively. They consist of two powder-coated stainless steel edge components, into which the anodized aluminum slot rails can be hung. Every third slot rail holder on both sides of the SmartEdge elite has a recess at the front, making it easier to align the slot rails horizontally. All modules are fully compatible with the SmartEdge. The SmartEdge classic includes the following components:

- 2 x powder-coated stainless steel edge components
- 2 x slot rails without side handles



SmartEdge KN 001, mounted on a KNAUER Device  
Demonstrators are not in scope of delivery

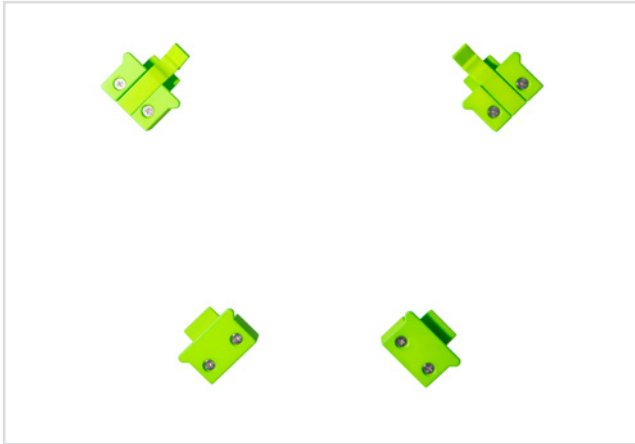


SmartEdge KN 001, mounted on a KNAUER Device  
Demonstrators are not in scope of delivery

Item	Type	PU	Item no.	Price in EUR
SmartEdge classic KN 001	for 150 and 200 mm Knauer-Housings	1	04006	249,99



## Wall mounting for SmartRack® or SmartFrame



Wall mounting for SmartRack® or SmartFrame

The wall mounting had been constructed for fixing the SmartRack® or SmartFrame at a rear wall or plate. The wall mounting kit for SmartRack® or SmartFrame includes the following components:

- 4 x hook receptacles, two of which have locks
- 16 x glass feed through sleeve segments
- 8 x sets of mounting hardware (consisting of screws, washers, and nuts) for installation

**ATTENTION:** Please ensure, that the wall or plate is stable enough, to hold the entire weight of the SmartRack® or the SmartFrame plus modules and equipment. The wall mount is compatible with the SmartRack® classic and SmartRack® classic mini, allowing secure attachment to a back panel or plate. For use with the SmartRack® primus, the feet must be removed prior to installation. This adjustment ensures proper use of the wall mount.



Wall mounting for SmartRack® or SmartFrame  
Note: SmartRack® classic mini is not included in the scope of delivery



Wall mounting when open

Item	Type	PU	Item no.	Price in EUR
Wall mounting for SmartRack® or SmartFrame	classic or primus	1	01616	79,99
Wall mounting for SmartRack® or SmartFrame	classic mini or primus mini	1	01617	79,99
Wall mounting for SmartRack® or SmartFrame	elite mini	1	01618	79,99
Wall mounting for SmartRack® or SmartFrame	elite	1	01619	79,99



## Customization of SmartRack® and SmartIntegrate Products

Better Basics Laborbedarf offers an unparalleled approach to laboratory workstation organisation with its customisable and modular solutions. Below is an overview of how our customisation services span both the SmartRack® and SmartIntegrate product lines:

### 1. Customization of the SmartRack®

#### a) For the SmartRack® and the SmartRack® mini

Our SmartRack® system is fully customisable to suit the specific needs of your workspace. Both the standard and mini versions can be adapted to the dimensions of your equipment and workflow. From compact configurations to larger frameworks, we enhance your laboratory's organisation and efficiency.

#### b) Frame Size Adjustments

Adjustable widths and heights allow the SmartRack® to integrate seamlessly into fume hoods, safety workbenches, or experimental setups. Each tailored frame is paired with appropriately sized slot rails, ensuring modular compatibility and reliability.

### 2. Customisation of SmartIntegrate Products

#### a) Bespoke SmartFrame for fume hoods

The SmartFrame optimises the organisation within fume hoods, offering a structured and safe arrangement for laboratory glassware, tools, and equipment. Custom-built frames provide a perfect fit for your specific workspace.

#### b) Tailored SmartRail for Lab Benches

SmartRails bring adaptability and precision to your laboratory benches. Designed for both high-throughput workflows and compact setups, they ensure reduced clutter and enhanced efficiency. Each rail is tailored to your preferred length and mounting specifications.

#### c) Custom Solutions for Biosafety Cabinets

For biosafety cabinets, our custom solutions include integrated frames, edges and rails designed to maximise space utilisation while supporting your workflows. Each component is built to ensure easy cleaning and adherence to safety regulations.

### 3. Custom Modules

#### a) Tailored for Any Laboratory Equipment

Using advanced 3D printing technology, we create modules and holders in any shape or size to fit your laboratory equipment. From pipette holders to mounts for specialised glassware, our bespoke designs cater to your unique requirements. Our rapid prototyping process ensures swift delivery of tailored solutions.

### Why Choose Better Basics for Customisation?

- 1. Precision Craftsmanship:** Each component is tailored to your exact specifications, guaranteeing optimal performance and seamless integration.
- 2. Fast Delivery:** Our in-house design and manufacturing teams ensure swift turnaround from concept to delivery.
- 3. Transparent Pricing:** Costs for customisation are agreed upon in advance, providing clarity and control.
- 4. Scalability:** Whether expanding an existing laboratory or building a new one, our products adapt to meet your growing needs.

### Transform Your Laboratory Workspace

With Better Basics Laborbedarf, your laboratory can benefit from customised SmartRack® or SmartIntegrate products. Visit [customising.better-basics-laborbedarf.de](https://customising.better-basics-laborbedarf.de) or contact our team today to unlock the full potential of your laboratory space.

This concise yet comprehensive approach ensures your laboratory benefits from enhanced efficiency, organisation, and safety—all tailored to your specific needs.

# Customizing

## Examples for realised customisations based on customer requests

### Special frame sizes

#### SmartRack® frame - customisable in width as well as height



#### SmartRack® frame - extra wide

For a special requirement we manufactured an extra wide frame of the SmartRack®. Due to the width, this SmartRack® makes optimal use of the working space in our customer's laboratory.

### Special modules for laboratory accessories and laboratory glassware

#### Holder for special glassware



#### Double holder for glassware with ST10

For a project, a customer needed a double holder for glassware ST10. The module allows glassware with standard ground joint ST10 to be easily hung next to each other. The specially shaped recess prevents the glassware from falling out.

Of course, adaptations of this kind are also conceivable for other glassware.

### Special modules for laboratory equipment

#### Holder for dandyVice wall mount



In cooperation with dandy innovations, a module for mounting a dandyVice wall bracket was developed. The combination of dandyVice wall mount and holder module from Better Basics Laborbedarf makes it easy to use the dandyVice in the SmartRack®.

## SmartIntegrate

Item	Type	Item no.	PU	Price in EUR	Page
SmartEdge BE 001	elite	04001	1	299,00	21
SmartFrame BE 001	classic mini	05009	1	339,00	22
SmartFrame BE 001	elite mini	05010	1	389,00	22
SmartFrame BE 001	primus mini	05011	1	239,00	22
SmartFrame MB 001	classic	05003	1	549,00	18
SmartFrame MB 001	classic mini	05004	1	419,00	18
SmartFrame MB 001	elite	05005	1	599,00	18
SmartFrame MB 001	elite mini	05006	1	469,00	18
SmartFrame MB 001	primus	05007	1	449,00	18
SmartFrame MB 001	primus mini	05008	1	319,00	18
SmartFrame WA 001	elite	05002	1	579,00	15
SmartFrame WA 002	elite	05013	1	579,00	16
SmartFrame WA 003	elite	05012	1	599,00	17
SmartRail BE 001		03001	1	239,00	20
SmartRail 1200 KO 001	1200 mm	03021	1	139,99	12
SmartRail 1200 MB 001	1200 mm	03026	1	139,99	19
SmartRail 1200 ME 001	1200 mm	03057	1	139,99	13
SmartRail 1200 WA 001	1200 mm	03005	1	129,99	7
SmartRail 1200 WA 002	1200 mm	03010	1	139,99	8
SmartRail 1200 WA 003	1200 mm	03015	1	139,99	9
SmartRail 1200 WE 001	1200 mm	03036	1	129,99	10
SmartRail 1200 WE 002	1200 mm	03041	1	139,99	11
SmartRail 1200 WM 001	1200 mm	03051	1	139,99	14
SmartRail 1500 KO 001	1500 mm	03022	1	159,99	12
SmartRail 1500 MB 001	1500 mm	03027	1	159,99	19
SmartRail 1500 ME 001	1500 mm	03058	1	159,99	13
SmartRail 1500 WA 001	1500 mm	03006	1	149,99	7
SmartRail 1500 WA 002	1500 mm	03011	1	159,99	8
SmartRail 1500 WA 003	1500 mm	03016	1	159,99	9
SmartRail 1500 WE 001	1500 mm	03037	1	149,99	10
SmartRail 1500 WE 002	1500 mm	03042	1	159,99	11
SmartRail 1500 WM 001	1500 mm	03052	1	159,99	14
SmartRail 300 KO 001	300 mm	03018	1	79,99	12
SmartRail 300 MB 001	300 mm	03023	1	79,99	19
SmartRail 300 ME 001	300 mm	03054	1	79,99	13
SmartRail 300 WA 001	300 mm	03002	1	69,99	7
SmartRail 300 WA 002	300 mm	03007	1	79,99	8
SmartRail 300 WA 003	300 mm	03012	1	79,99	9
SmartRail 300 WE 001	300 mm	03033	1	69,99	10
SmartRail 300 WE 002	300 mm	03038	1	79,99	11
SmartRail 300 WM 001	300 mm	03048	1	79,99	14

# Item overview

Item	Type	Item no.	PU	Price in EUR	Page
SmartRail 600 KO 001	600 mm	03019	1	99,99	12
SmartRail 600 MB 001	600 mm	03024	1	99,99	19
SmartRail 600 ME 001	600 mm	03055	1	99,99	13
SmartRail 600 WA 001	600 mm	03003	1	89,99	7
SmartRail 600 WA 002	600 mm	03008	1	99,99	8
SmartRail 600 WA 003	600 mm	03013	1	99,99	9
SmartRail 600 WE 001	600 mm	03034	1	89,99	10
SmartRail 600 WE 002	600 mm	03039	1	99,99	11
SmartRail 600 WM 001	600 mm	03049	1	99,99	14
SmartRail 900 KO 001	900 mm	03020	1	119,99	12
SmartRail 900 MB 001	900 mm	03025	1	119,99	19
SmartRail 900 ME 001	900 mm	03056	1	119,99	13
SmartRail 900 WA 001	900 mm	03004	1	109,99	7
SmartRail 900 WA 002	900 mm	03009	1	119,99	8
SmartRail 900 WA 003	900 mm	03014	1	119,99	9
SmartRail 900 WE 001	900 mm	03035	1	109,99	10
SmartRail 900 WE 002	900 mm	03040	1	119,99	11
SmartRail 900 WM 001	900 mm	03050	1	119,99	14

## Solutions for integration into laboratory equipment

Item	Type	Item no.	PU	Price in EUR	Page
SmartEdge classic KN 001	for 150 and 200 mm Knauer-Housings	04006	1	249,99	23

## Additional Accessories

Item	Type	Item no.	PU	Price in EUR	Page
Wall mounting for SmartRack® or SmartFrame	classic mini or primus mini	01617	1	79,99	24
Wall mounting for SmartRack® or SmartFrame	classic or primus	01616	1	79,99	24
Wall mounting for SmartRack® or SmartFrame	elite	01619	1	79,99	24
Wall mounting for SmartRack® or SmartFrame	elite mini	01618	1	79,99	24

Net prices plus statutory VAT. | Valid from 01.01.2025

The general terms and conditions of Better Basics Laborbedarf GmbH apply.



## Technical information:

- All products are washable with water and mild detergent. In addition all components can be wiped with alcohol-based disinfectants.
- The plastics and metals used are 100% recyclable.
- Our products are autoclavable (maximum temperature 121 °C).
- The plastic elements are resistant to heat deformation under normal laboratory conditions.
- To gently clean the anodised aluminium rail, we recommend using a pH-neutral hand-washing detergent. Ensure that the hand wash detergent is odourless and contains no perfumes, greases or additives. Clean the slot rail by hand and rinse thoroughly with clean water.

## Note on joint tolerances for ST14:

- Maximum outside diameter at the narrowest point of the cone joint: 17.2 mm (larger diameters are too wide for the holder and cannot be held)
- Minimum outer diameter at the widest point of the cone joint: 18.0 mm (smaller diameters are too narrow for the holder and would fall out)

## Note on joint tolerances for ST29:

- Maximum outside diameter at the narrowest point of the cone joint: 31.4 mm (larger diameters are too wide for the holder and cannot be held)
- Minimum outer diameter at the widest point of the cone joint: 32.8 mm (smaller diameters are too narrow for the holder and would fall out)

**IMPORTANT TO NOTE:** The products of the SmartIntegrate line, the SmartRack® and SmartRack® mini as well as the SmartCase and SmartStand are not suitable for the permanent storage of hazardous substances.

We reserve the right to make technical changes, material or model changes, errors and misprints excepted. If you have any further questions, please do not hesitate to contact us at [contact@better-basics.de](mailto:contact@better-basics.de)

## For more detailed information, please visit our website:

Functionality of SLS 3D printing:	<a href="http://www.sls-3d-printing.better-basics-laborbedarf.de">www.sls-3d-printing.better-basics-laborbedarf.de</a>
Resistance to UV light:	<a href="http://www.uv-resistance.better-basics-laborbedarf.de">www.uv-resistance.better-basics-laborbedarf.de</a>
Resistance to aggressive media:	<a href="http://www.material-resistance.better-basics-laborbedarf.de">www.material-resistance.better-basics-laborbedarf.de</a>
Sustainability and design-efficient manufacturing:	<a href="http://www.sustainability.better-basics-laborbedarf.de">www.sustainability.better-basics-laborbedarf.de</a>



Image: Building of the Better Basics Laborbedarf GmbH in Dresden

## YOU ARE INTERESTED IN OUR PRODUCTS OR YOU HAVE FURTHER QUESTIONS?

Get in touch with us:  
[contact@better-basics.de](mailto:contact@better-basics.de)

You can also find more information and news about our product innovations at  
[www.Better-Basics-Laborbedarf.de](http://www.Better-Basics-Laborbedarf.de)

### **Better Basics Laborbedarf GmbH**

Loebtauer Str. 69  
01159 Dresden  
Germany

T: +49 (0) 178 9617 577 (Direct customers)  
T: +49 (0) 176 6233 8026 (Sales partners)  
E: [contact@better-basics.de](mailto:contact@better-basics.de)  
W: [www.Better-Basics-Laborbedarf.de](http://www.Better-Basics-Laborbedarf.de)

### **Our request to you**

Our products such as our SmartRack® and our SmartIntegrate products are only as good as their users. With our roots in the Leibniz Institute for Polymer Research Dresden, our company Better Basics Laborbedarf stands for the tradition of "Made in Germany" quality. We feel in multiple aspects committed to this quality label for German companies, which stands for high innovative strength. Even beyond our product catalogue, the same applies for us at Better Basics: Just contact us if you have ideas for extensions or improvements or if you notice something in your daily laboratory routine that we should optimize right away.

We want to create the best possible working environment for you in the laboratory and we are grateful for any comments and inspiration. We can jointly shape the future of laboratory work by cooperating with scientists and researchers. Just like you, we're always looking for a way to make our world a little better every day.

### **Impress:**

Better Basics Laborbedarf GmbH  
Loebtauer Str. 69, G-01159 Dresden

E-Mail: [info@better-basics.de](mailto:info@better-basics.de)

CEO: Mario Schneider

Commercial register: HRB 39524; Register court: Amtsgericht Dresden

VAT registration number: DE327508812

